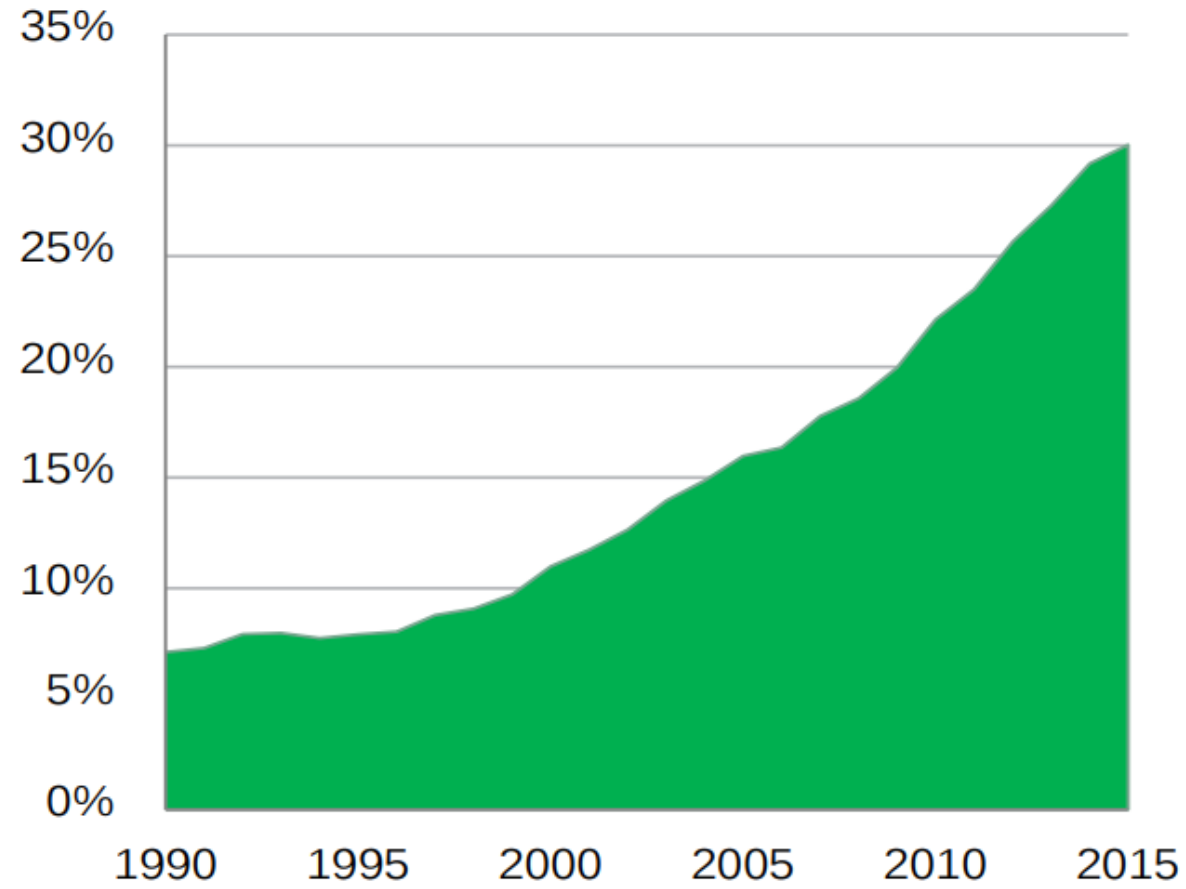
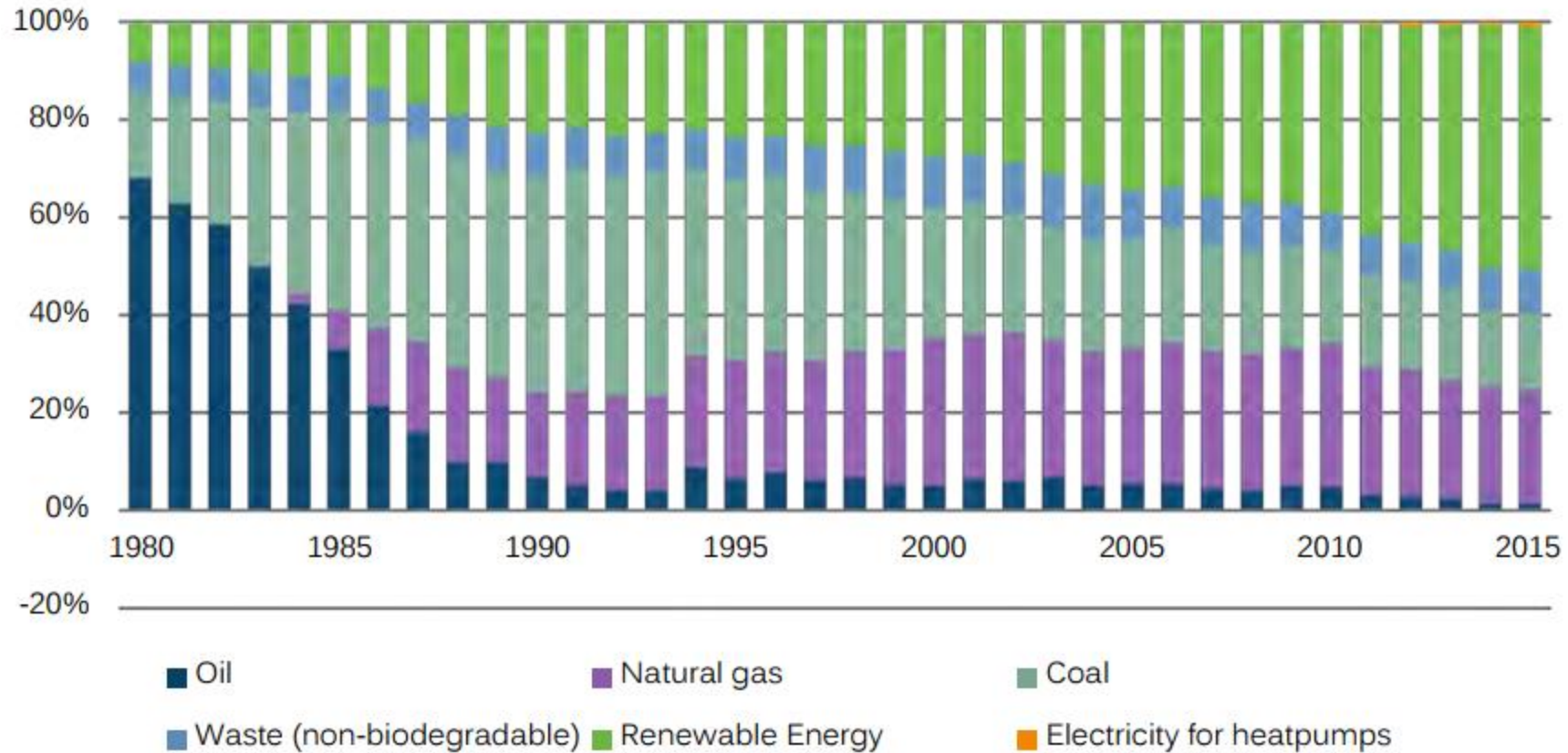


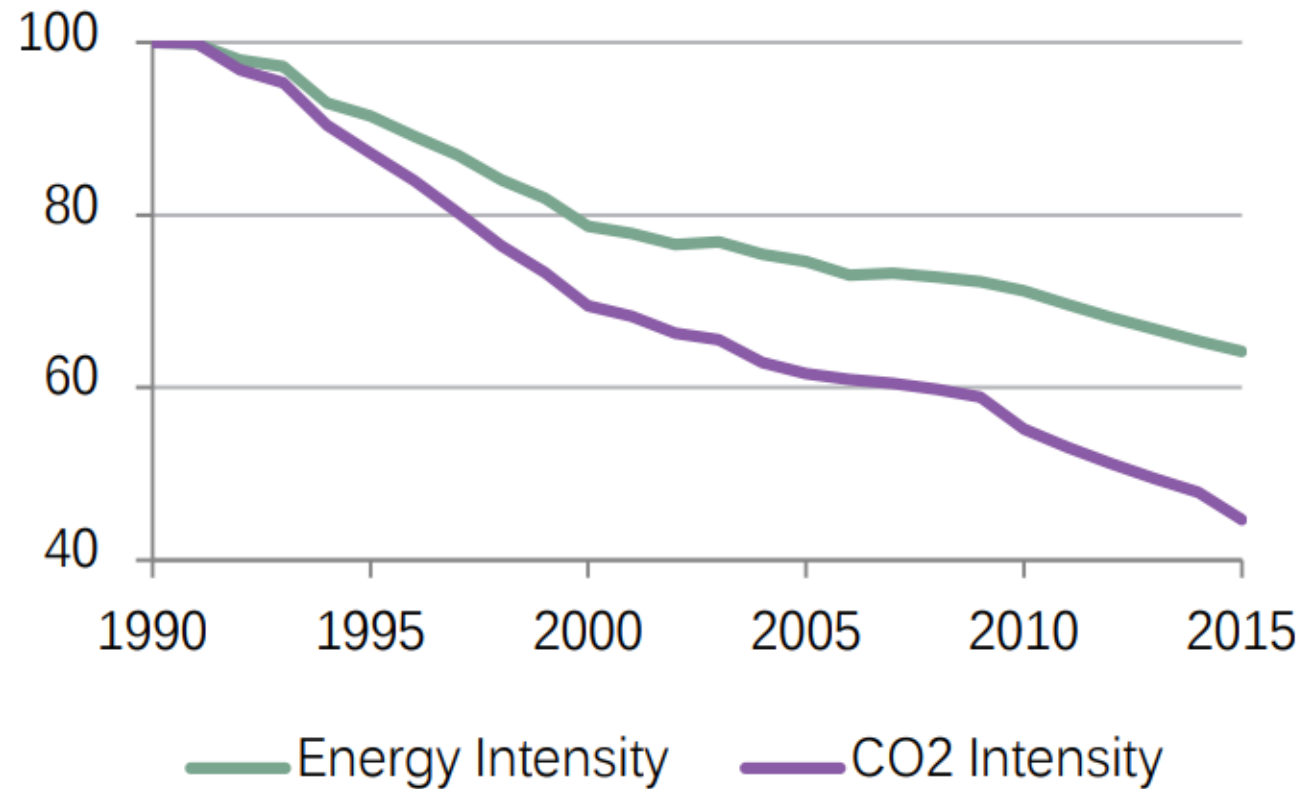
Share of RE in final energy consumption



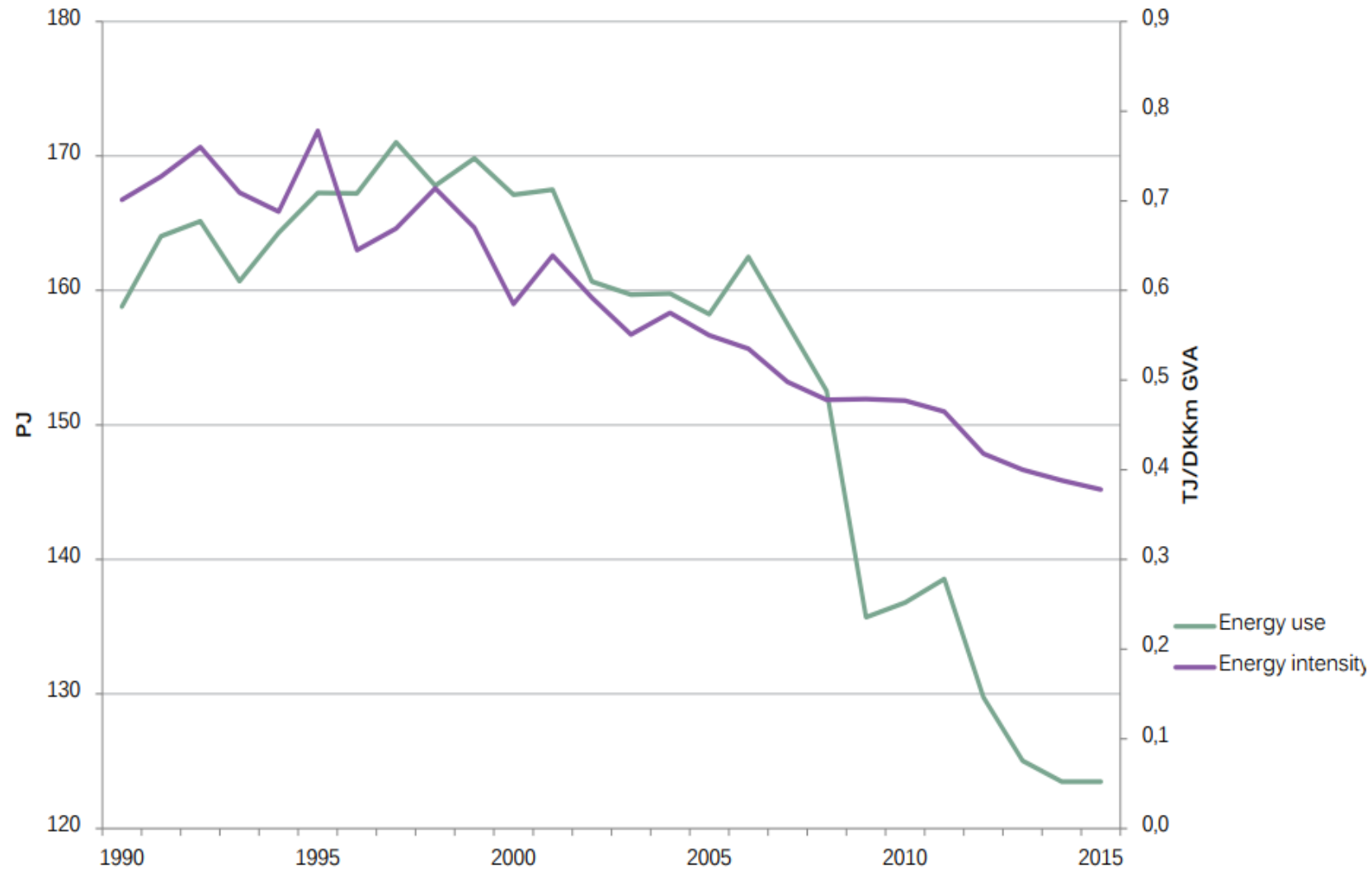
Fuel for District Heating



Danish trends - Energy and CO2 intensity (1990=100)

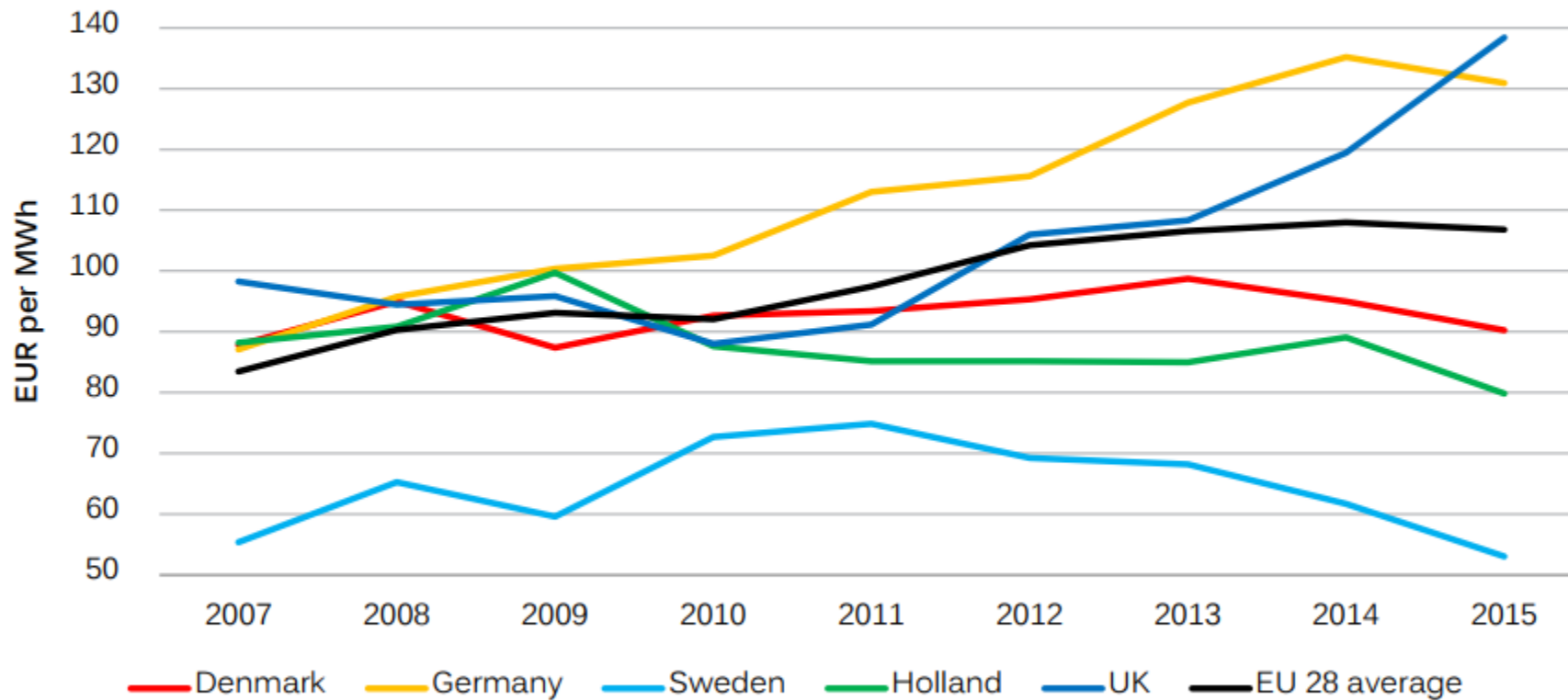


Energy use and intensity in the Danish manufacturing sector



Note: Energy (E) use in PJ and E intensity in TJ / mio EUR gross value added (2010-prices) from 1990 to 2013

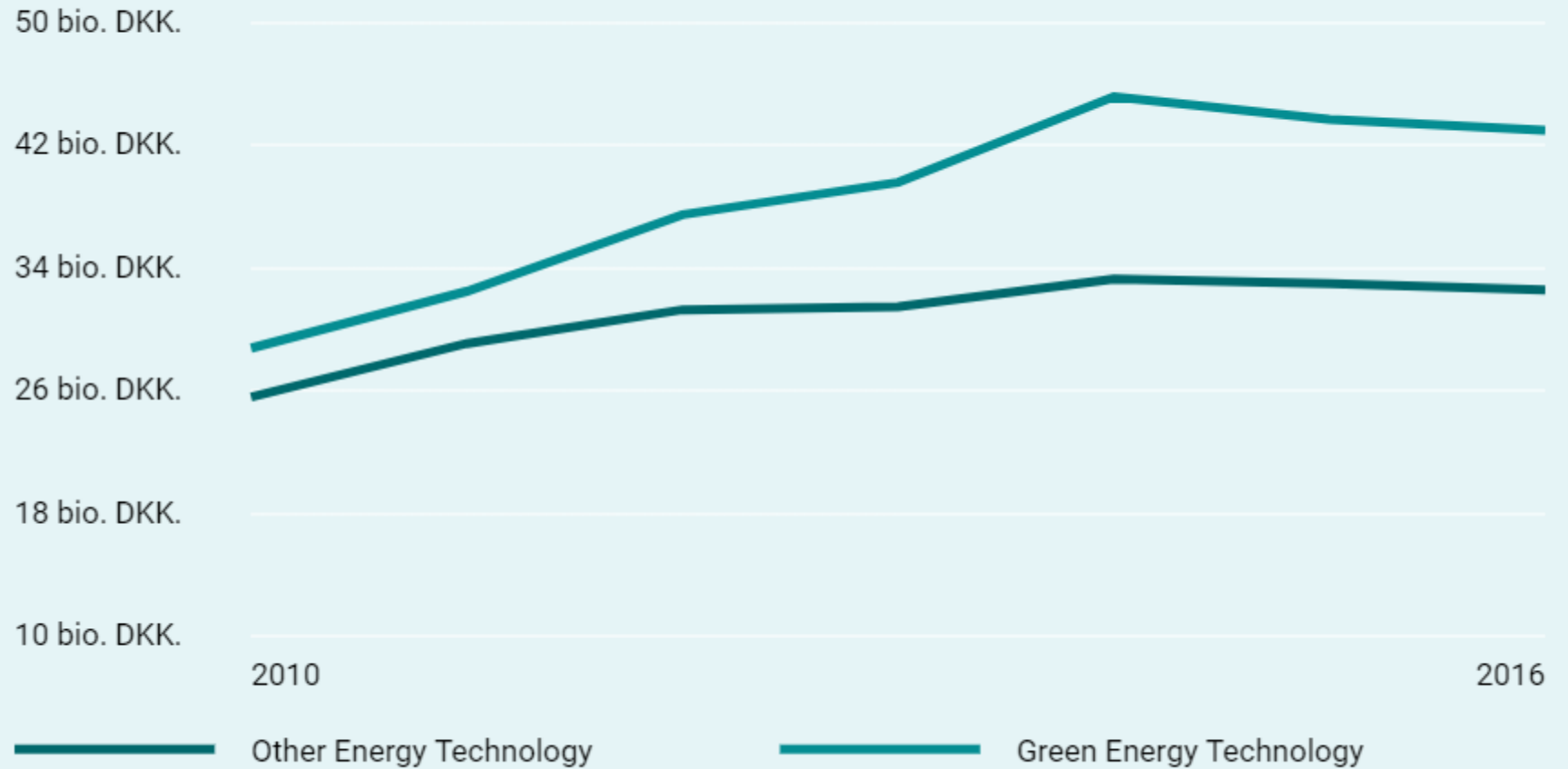
Industrial power prices



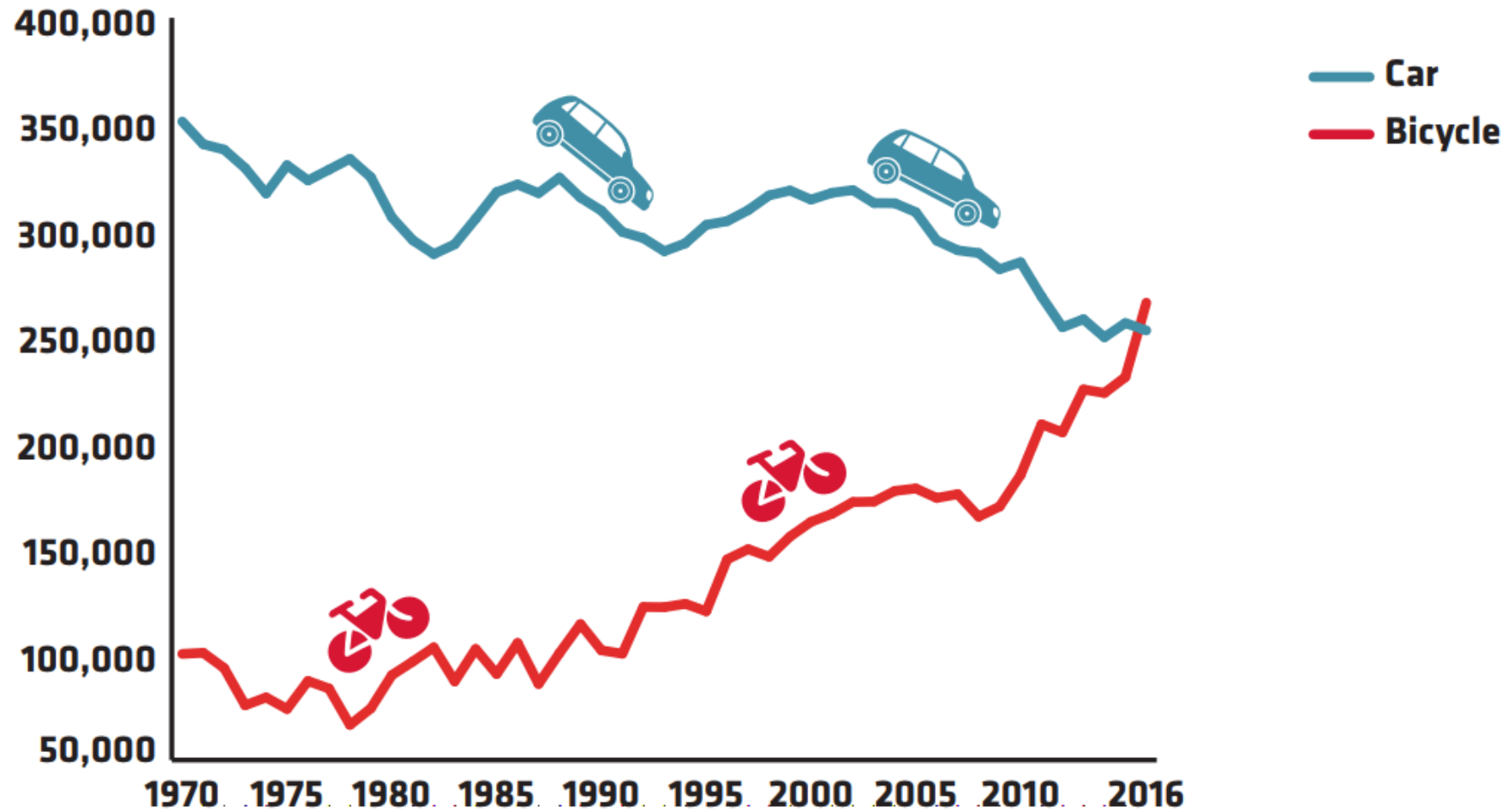
Note: Electricity prices including tariffs for businesses using 2-20GWh annually. Source: Danish Energy Agency

Export of Energy Technology

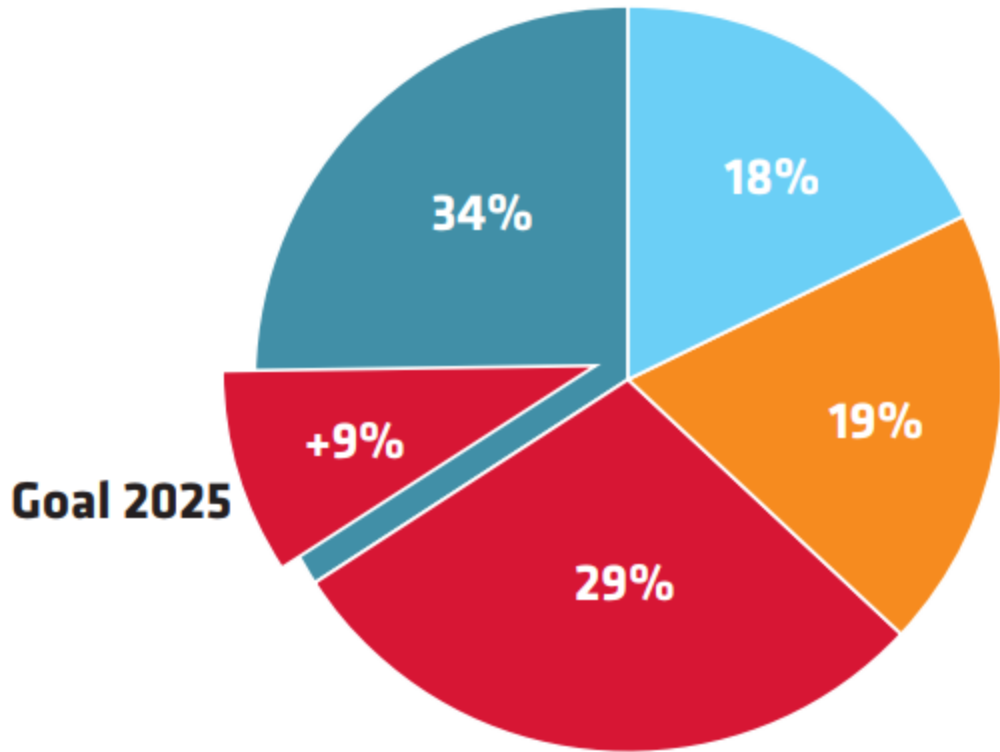
Denmark is European champion in export of energy technology. Last year Danish companies exported energy technology worth 71.4 billion DKK. That is 11 pct. of the total Danish export.



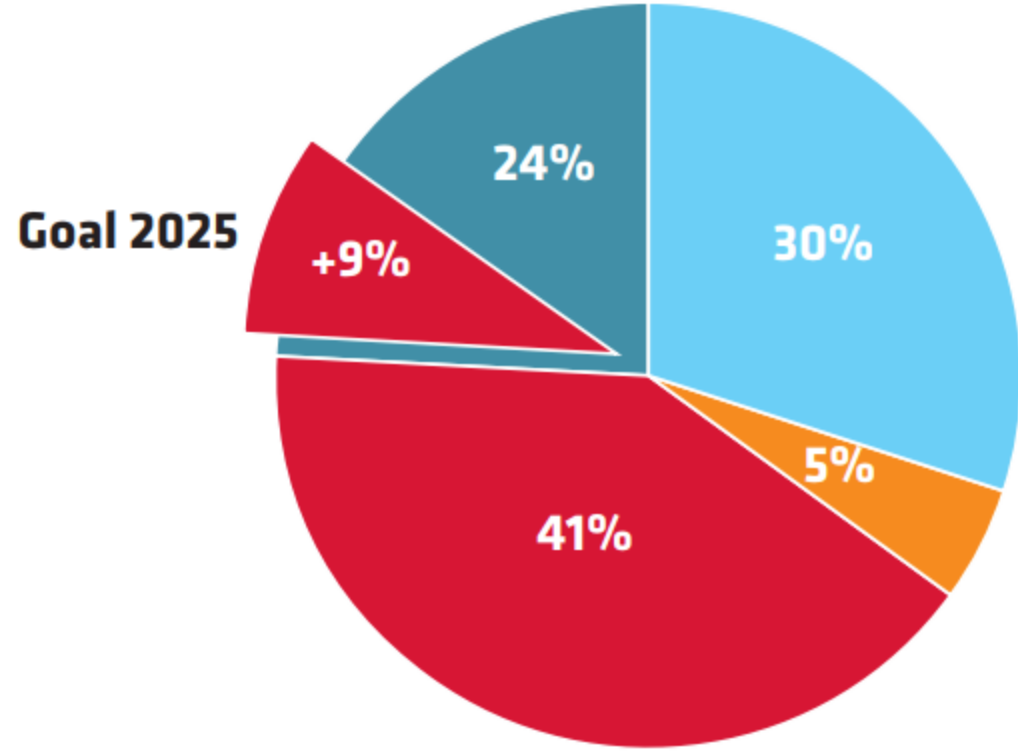
TRAFFIC CROSSING THE CITY CENTER IN COPENHAGEN 1970-2016



All trips in Copenhagen



Trips to work or study in Copenhagen



Bicycle **Public transport** **Car** **Walk**

COPENHAGERNERS' REASONS FOR CYCLING

